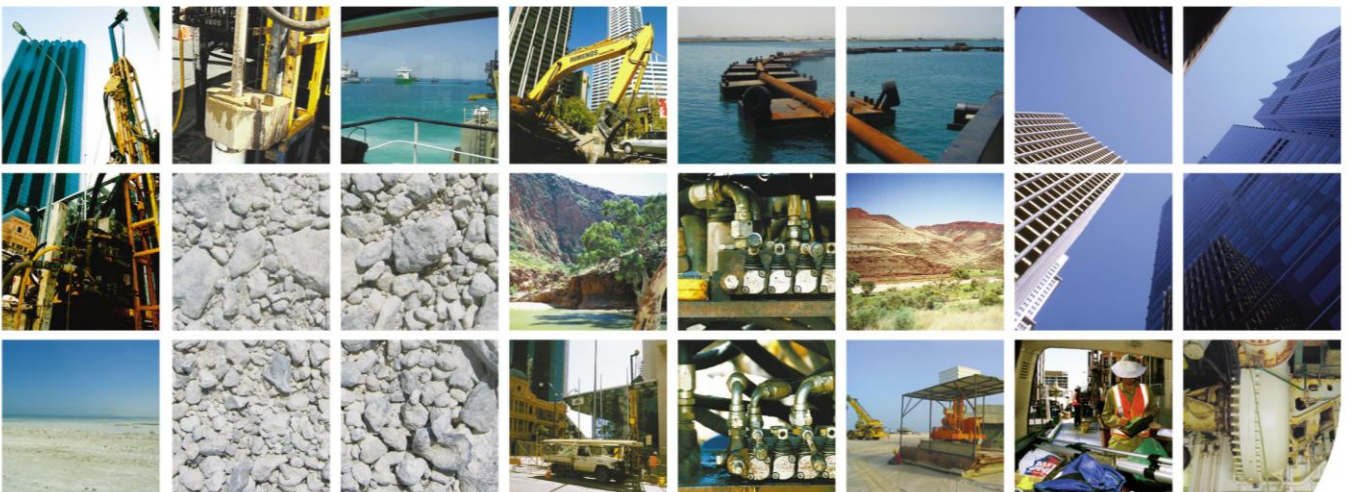


# User Guide

## Datgel Secure Export Tool

DSET-UG-001 - 1.02

October 2009



# Disclaimer

The information in this publication is subject to change without notice and does not represent a commitment on the part of Datgel Pty Ltd. The software described in this document is furnished under a license agreement or nondisclosure agreement. The software must be used or copied only in accordance with the terms of the agreement.

*Every effort was made to ensure accuracy of this information. However, Datgel Pty Ltd makes no warranty as to the correctness of this information or the supplied files.*

Printed in Australia. All rights reserved worldwide. No part of this publication may be reproduced in any form or by any means without the prior written consent of Datgel Pty Ltd. Comments are welcome and become the property of Datgel Pty Ltd.

All products mentioned are trademarks of the respective producers.

Copyright © Datgel Pty Ltd 2006-2009

Datgel Pty Ltd  
Suite 8, Level 1, The Hub  
89 - 97 Jones Street  
Ultimo NSW 2007  
Australia

Tel: +61 2 8202 8600  
Fax: +61 2 8202 8606

Email: [info@datgel.com](mailto:info@datgel.com)  
Website: [www.datgel.com](http://www.datgel.com)



# Contents

About the Product .....	1
Support .....	1
System Requirements .....	1
gINT .....	1
Hardware and Operating System .....	1
Required Windows Components .....	1
Conventions and typography used in this guide .....	1
Field Colours .....	2
1 Installing the Secure Export Tool .....	3
1.1 Program Installation.....	3
1.2 Merge gINT Library Objects .....	3
1.3 Validate or Activate License .....	4
2 Configuring the Secure Export Tool.....	5
2.1 Library Tables.....	5
2.1.1 DG_SECURITY_PROJECT_TABLES .....	5
2.1.2 DG_SECURITY_TABLES .....	5
2.1.3 DG_SECURITY_TABLE_TYPE .....	6
2.2 Datgel Secure Export Tool Configuration Form .....	6
2.2.1 General Settings.....	7
2.2.2 Email Settings .....	7
2.2.3 Export Settings .....	8
2.2.4 Example Configuration .....	9
3 Running the Secure Export Tool.....	12
3.1 Adding the Secure Export Tool to Task Scheduler .....	12
4 Troubleshooting.....	14
4.1 DG_SECURITY_TABLES .....	14
4.2 Secure Export Tool Configuration .....	14
4.3 Secure Export Tool.....	14

# About the Product

The Datgel Secure Export Tool is a program that exports gINT project files, AGS files and text files containing only the data that has been approved or that was approved in a configurable time period, all in one automated process.

In addition, the Secure Export Tool can repair/compact all working gINT databases as a part of the automated process.

Optionally, the exported files can be converted to a different data structure to aid in data exchange and management, and compressed in a Zip archive and timestamped for easy storage and archiving.

The Secure Export Tool is fully user configurable and can be executed as a scheduled task to run each night if required.

You need to complete the installation procedure (see *Installing the Secure Export Tool on page 3*) and activate (see *Datgel Product Licensing System User Guide*) before you can use the Secure Export Tool.

## Support

12 months support and maintenance is included with the license purchase. For technical support please email [support@datgel.com](mailto:support@datgel.com) or call +61 2 8202 8600.

## System Requirements

### gINT

The product runs optimally using gINT 8.2.005 or higher, however it will run using gINT 8.1 or higher.

gINT Professional is recommended. The product will run using gINT Logs, gINT Logs Plus, and gINT Professional. However some export formats are not available in gINT Logs.

### Hardware and Operating System

Same system requirements as gINT 8.2, see: [http://www.gintsoftware.com/products\\_requirements.html](http://www.gintsoftware.com/products_requirements.html).

### Required Windows Components

1. Windows Installer 3.1
2. .NET 3.5 Framework SP1

## Conventions and typography used in this guide

Note: Tips and additional Information to help you.

>	Used to indicate a series of menu commands. e.g. Select <b>File &gt; Open</b> .
	Used to indicate a gINT Application Group, Application, Table Group or Table , e.g. <b>DATA DESIGN   Project Database</b>
<b>Bold Text</b>	Items you must select, command buttons, or items in a list. e.g. Navigate to <b>UTILITIES   Convert Projects</b> (4 <sup>th</sup> tab).

<i>Italics Emphasis</i>	Use to emphasize the importance of a point such as parameters. e.g. Data Entry – Check <i>Omit Must Save prompt when save is required</i>
CAPITALS	Names of keys on the keyboard. for example, SHIFT, CTRL, or ALT.
KEY+KEY	Key combinations, for example CTRL+P, or ALT+F4.
Code Snippet	Indicates a code snippet within a paragraph
<code>Code sample</code>	Indicates a sample program codes inserted in user guide e.g. <code>public override string ToString ()</code>
File name or path	Used for formatting file name and paths e.g. <code>di_lib.glb</code> or <code>V:\10 gINT\Datgel Install Files\</code>
<code>Table_Name</code>	Database table name, e.g. <code>POINT_TABLE</code> .
<code>Field_Name</code>	Database field name; e.g. <code>PointID</code>
Command line	Command line, presented exactly as it must be entered e.g. <code>cdir</code>

## Field Colours

Each of the fields in the project tables have been coloured to improve the data entry process as indicated below in Table 1.

**Table 1 – Field Colours**

Field Colour	Field Name and Explanation
Yellow	gINT Key Field – mandatory data entry
Pastel Purple	AGS Data – data associated with the AGS Data Interchange Format
Pastel Green	Calculated Field – data is written to this field by Datgel's code
Pastel Beige	Data Entry Field – data should be entered into this field, or data in this field influences the calculation
Pastel Red	Legacy Data Field – historic data entered here, is typically from an old database
Pastel Blue	Output Option – used to control how data displays on a report
Pastel Orange	Remark or Metadata Field – additional data associated with the primary information
Grey	Read-only

# 1 Installing the Secure Export Tool

There are two parts to the installation process:

- Program installation
- Merge gINT Library objects
- Activate the product license

The first three steps can be completed in any order and are described below. The activation procedure must be done last and is described in the *Datgel Product Licensing System User Guide*.

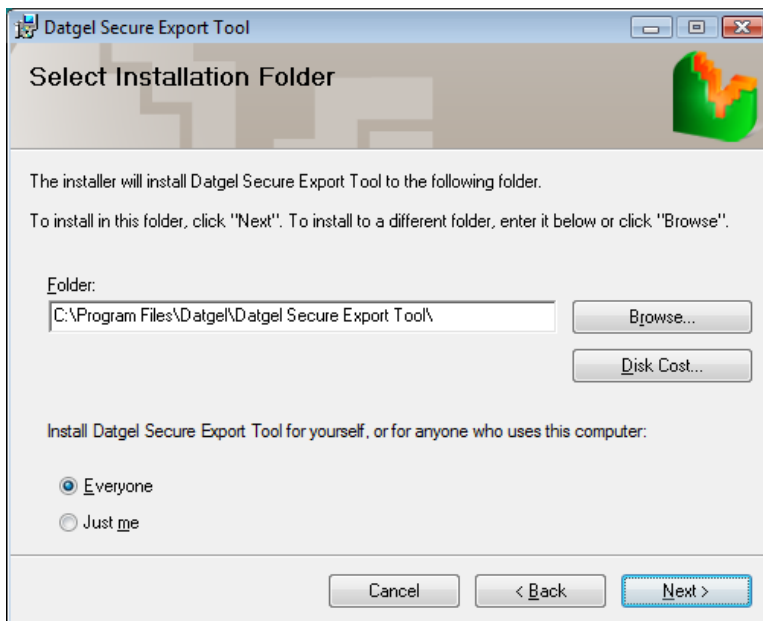
## 1.1 Program Installation

The Secure Export Tool requires that the Microsoft .net 3.5 framework SP1 is installed on the PC prior to the installation of the Secure Export Tool. If your PC does not have the .net 3.5 framework SP1 installed, then it will be automatically installed during the Secure Export Tool installation process. You need local administrator rights to the PC to install the Secure Export Tool.

To install the Secure Export Tool:

- Ensure that gINT is closed
- Run the **setup.exe** file
- Follow the prompts

In the following screen, you can either accept the default location for the new file, or change it by clicking **Browse**. The Disk Cost button shows the space required versus space available on each of your disks.

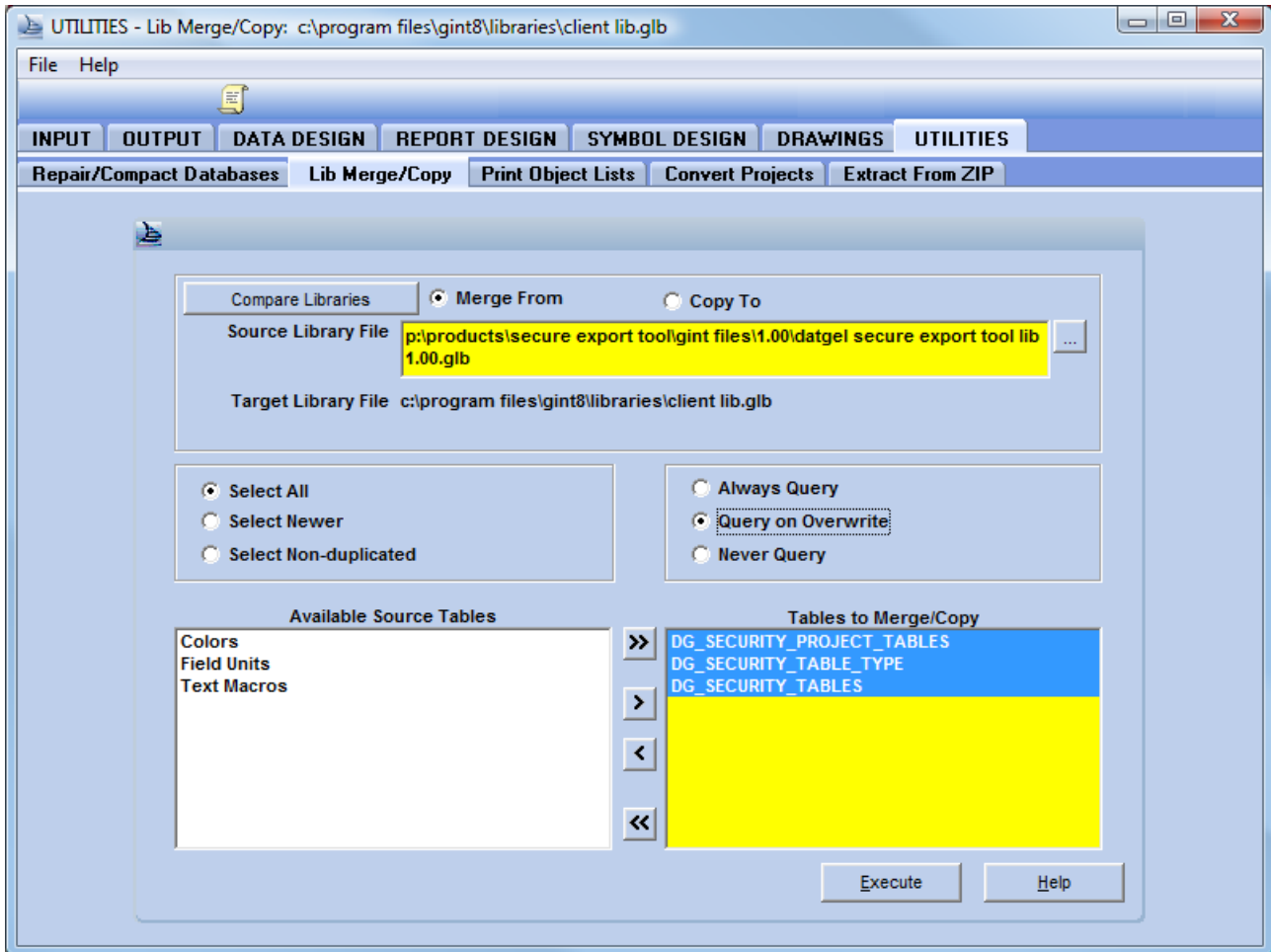


## 1.2 Merge gINT Library Objects

1. Make a backup copy of your existing library file. By default this is located at:

C:\Program Files\gINT8\libraries\

2. Start gINT and open the library and project file you wish to use the Datgel Secure Export Tool with.
3. Select **UTILITIES | Lib Merge/Copy**.
4. Browse the Source Library File for `datgel secure export tool lib #.##.glb`
5. Check the **Query On Overwrite** box, then move `DG_SECURITY_PROJECT_TABLES`, `DG_SECURITY_TABLE_TYPE` and `DG_SECURITY_TABLES` to the yellow box on the right side by clicking the **>>** button.



6. Click **Execute**.

This merges the library tables which are used to store configuration for the Secure Export Tool.

### 1.3 Validate or Activate License

After installation (and before using the Secure Export Tool), validate or activate the user license as described in Chapter 2 of the *Datgel Product Licensing System User Guide*.

To open the License Activation form, double click on the **Datgel Secure Export Tool Licensing** desktop icon, or select the Start menu item from **Start > Programs > Datgel > Datgel Secure Export Tool > Datgel Secure Export Tool Licensing**.

# 2 Configuring the Secure Export Tool


## 2.1 Library Tables

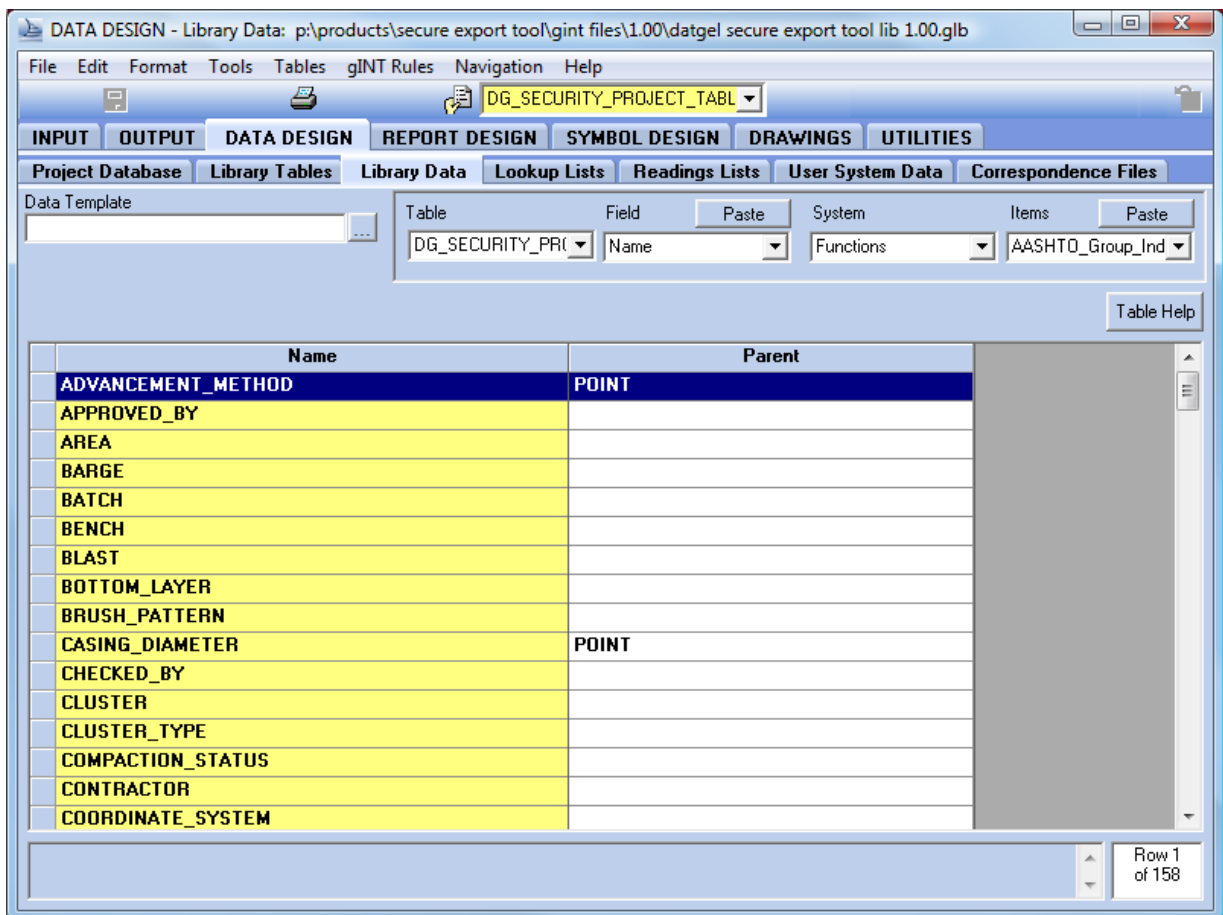
The library tables must be configured to use the Secure Export Tool to export Project data to a gINT Project file or a text file.

These Library Tables may already exist if you have the Datgel Security Tool implemented into your gINT files.

### 2.1.1 DG\_SECURITY\_PROJECT\_TABLES

This table contains a list of all the tables in the project files that is used as a lookup list in the [DG\\_SECURITY\\_TABLES](#) library table. Hence, this library table must be populated before configuring the [DG\\_SECURITY\\_TABLES](#) library table.

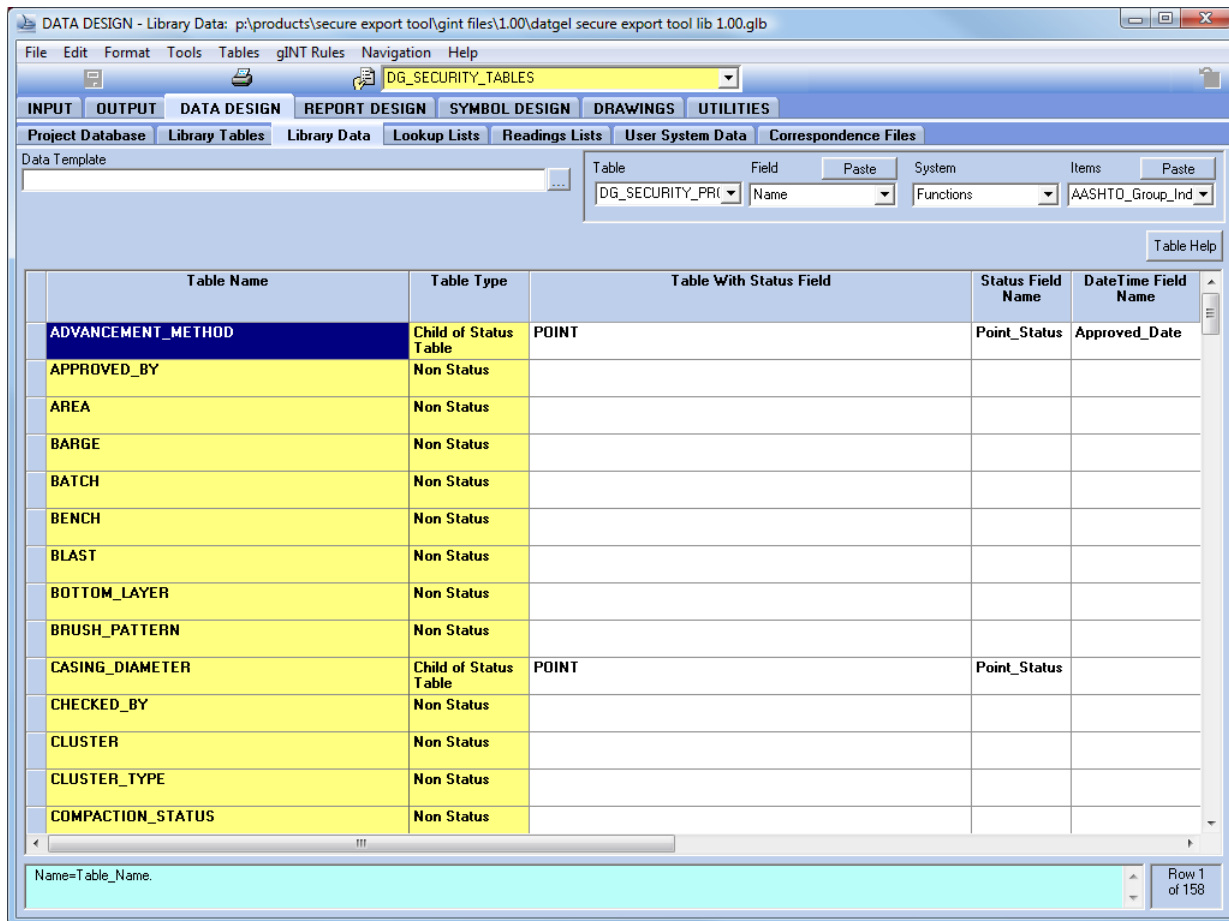
An easy way to populate this table is to export a list of project data tables by clicking on the list  button in **INPUT**, exporting the list, and then copy/pasting the Name and Parent columns into the library tables directly.



### 2.1.2 DG\_SECURITY\_TABLES

This table is where the status and date time fields for each project tables are configured. The four fields that directly affect the Secure Export Tool are:

- **Table\_Name** – The table name of the tables in the gINT Project file. The drop down list should be populated with the table names entered in the DG\_SECURITY\_PROJECT\_TABLES library table. If a table name that exists in the Project table is not added, Datgel Secure Export Tool will always export that table, regardless of that table’s contents,
- **Table\_Type** – The Table Type determines the type of table in relation to Status. A Table Type of *Status Table* indicates that this table has a Status field, or a Date Time field, or both.
- **Status\_Field\_Name** – the field name in this table that contains the status value.
- **DateTime\_Field\_Name** – the field name in this table that contains the Date Time value.



### 2.1.3 DG\_SECURITY\_TABLE\_TYPE

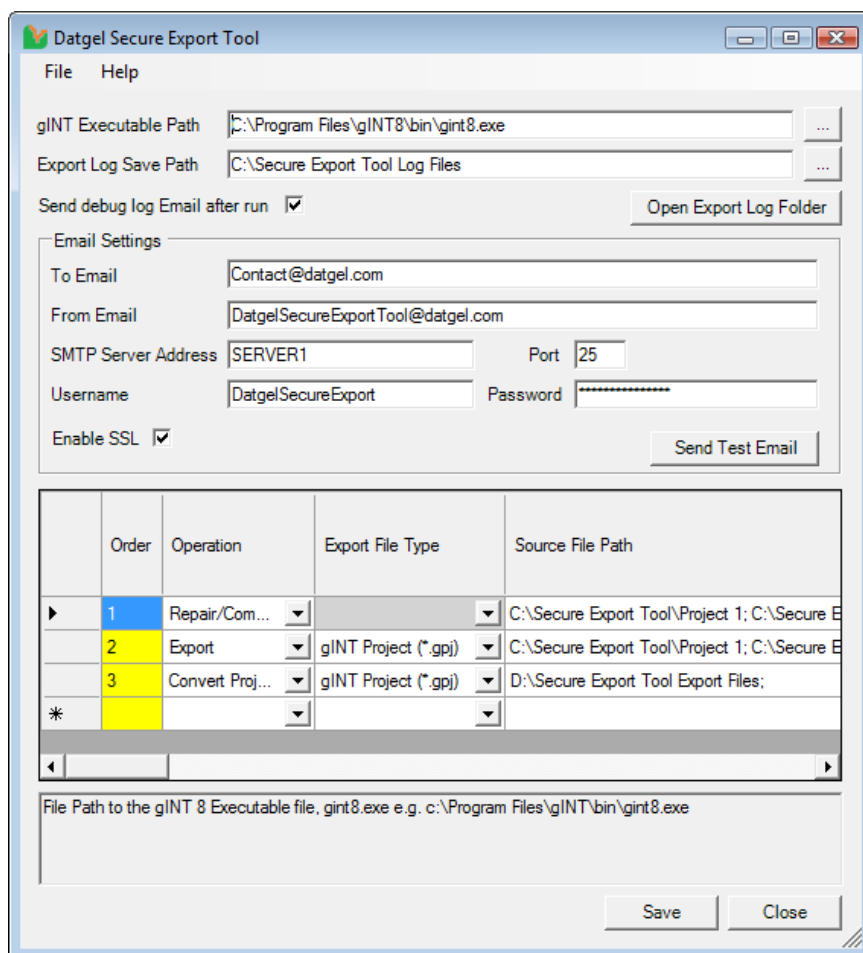
This table contains the Table Types lookup values used in the *Table\_Type* field on the *DG\_SECURITY\_TABLES* library table. This table should not be modified.

## 2.2 Datgel Secure Export Tool Configuration Form

The Secure Export Tool Configuration Form is where all the file names, folder paths, Status and Date Time triggers and a host of other export options are configured. Explanations of each of the configurable options are listed below.

**Note:** Your user account must have administrator rights to the local computer in order to run the Configuration Form.

To open the Configuration Form, double click on the **Datgel Secure Export Tool Configuration** desktop icon, or select the Start menu item from **Start > Programs > Datgel > Datgel Secure Export Tool > Datgel Secure Export Tool Configuration**.



## 2.2.1 General Settings

- **gINT Executable Path** – File path to the gINT 8 executable file, gint8.exe
- **Export Log Save Path** – Folder path to where the export log files will be saved
- **Send Debug Log Email after run** – Check this if you want the Secure Export Tool to send an email with the Export Log as the attachment to one or more specified email addresses. The options within the Email Settings will be enabled when this box is checked

## 2.2.2 Email Settings

The Email Settings will be enabled and made editable only when *the Send debug Log after run* option is checked. The method of email transmission is via SMTP (Simple Mail Transfer Protocol).

- **To Email** – A comma separated list of email addresses of the recipients of the debug log email
- **From Email** – The debug log sender's email address
- **SMTP Server Address** – SMTP server address, eg. DATGELSVR1 or 192.168.83.1
- **Port** – The SMTP Port Number, typically 25
- **Username** – Username to log onto the SMTP Server, if required
- **Password** – Password to log onto the SMTP Server, if required
- **Enable SSL** – Check to enable SSL, if required

- **Send Test Email** – Click this button to send a test email with the current Email settings.

### 2.2.3 Export Settings

To aid in the configuration of the Export Settings, new rows should be filled in from left to right, as the irrelevant cells will be greyed out as the settings are filled in.

- **Order** – The order the operations are performed. The Secure Export Tool will execute the operations from the lowest order value to the highest. A value is required, and it must be numeric.
- **Operation** – The operation to be performed. There are three options, Export, Repair/Compact and Convert Projects.
- **Export File Type** – The type of file to be exported
- **Source File Path** – A semi-colon (;) delimited list of folder paths containing the source gINT Project files (\*.gpj) for the operation. Click on the browse button to append a folder path to this field. To delete or modify the folder paths, click on the field directly until the cursor appears.
- **Search Subdirectories** – Check to search the subdirectories of each Source File Path listed recursively for the source Project files.
- **gINT Library** – File path to the gINT Library (\*.glb) file that contains the required library tables for the Export operation or Convert Projects operation. Click on the browse button to browse to the gINT library file.
- **Set Library After Operation** – File path to the gINT Library (\*.glb) file to set after exporting or converting projects.
- **Correspondence File** – File path to the gINT Correspondence file (\*.gci, \*.gcx) to use when converting gINT Project files or exporting Excel or text files, if required. Click on the browse button to browse to the correspondence file.
- **Data Template** – File path to the gINT Data Template file (\*.gdt) to use when converting gINT project files, if required. Click on the browse button to browse to the data template file.
- **Export File Save Path** – Folder path to where the exported files will be saved to. Click on the browse button to browse to the folder path.
- **Export File Save Path Time Stamp** – Appends the current date and time as a time stamp to the export file name, folder name, or both. Prefix adds the time stamp to the front of the file/folder name. Suffix adds the timestamp to the end of the file/folder name. None or empty will not append a time stamp.
- **Apply Export Time Stamp To** – Select File to append the time stamp to each exported file, Folder to append the time stamp to the folder, or Files and Folder to append the Time Stamp to both. Leaving this field blank will not apply a Time Stamp to either files or folder.
- **Export File Path Folder Name** – The name of the folder to use in conjunction with the folder time stamp.
- **Add Exported Files to Zip** – Check to add the exported files to a Zip file
- **Delete Exported Files After Zip** – Check to delete the exported files after they have been zipped.
- **Zip File Name** – name of the Zip file, if this field is left blank and Add Exported Files to Zip is checked, then the Zip File name will default to “DEST.Export”.
- **Zip File Time Stamp** – Appends the current date and time as a time stamp to the Zip file. Prefix adds the time stamp to the front of the Zip file name, Suffix adds the timestamp to the end of the Zip file name. Selecting None or blank will not append a time stamp to the Zip file.
- **Status** – Records on the Status tables on each source Project File will be exported if the value on the Status field is greater than or equal to the value specified in this field.

- **PointID Date Time Filter (hrs)** – Time filter to export PointIDs that have changed within the last specified number of hours from the time the Secure Export Tool is run. This field will compare the values in the Date Time field on the POINT table, and choose to export the PointID
- **Project Date Time Filter (hrs)** – Time filter to export the Project files only if they have had a change within the last specified number of hours. The Date Time field on the POINT table is used to determine if a Project file has had a change. If not, then the Project file will not be exported.
- **'Where' Clause** – Additional filtering criteria, the text entered here will be appended to the existing SQL query used to filter the export. Text must be in SQL format, and the field names referenced in the text must exist for all project tables with a Status field in the source project file.
- **Export Site Map** – Check to export the Site Map in the source projects
- **Export Surfaces** – Check to export internally and externally stored Surfaces in the source projects
- **Export Drapes** – Check to export Fence Drapes in the source projects

## 2.2.4 Example Configuration

Order	Operation	Export File Type	Source File Path	Search Subdirectories
1	Repair/Compact		C:\Secure Export Tool\Project 1; C:\Secure Export Tool\Project 2;	<input checked="" type="checkbox"/>
2	Export	gINT Project (*.g...)	C:\Secure Export Tool\Project 1; C:\Secure Export Tool\Project 2;	<input checked="" type="checkbox"/>
3	Convert Projects		D:\Secure Export Tool Export Files;	<input checked="" type="checkbox"/>
4	Export	AGS (*.ags)	C:\Secure Export Tool\Project 2;	<input type="checkbox"/>
*				<input type="checkbox"/>

- **Row 1** – Repair/compacts all applicable gINT files (\*.gpj, \*.glb, \*.gdt, \*.gsf, \*.gsh) in the *Project 1* and *Project 2* directories in *C:\Secure Export Tool* and subdirectories
- **Row 2** – Export all gINT Project files found in the *Project 1* and *Project 2* directories in *C:\Secure Export Tool* and their subdirectories
- **Row 3** – Convert all gINT project files found in *D:\Secure Export Tool Export Files* and subdirectories
- **Row 4** – Export all gINT Project files found in *C:\Secure Export Tool\Project 2* in this directory only

gINT Library	Set Library After Operation
...	...
C:\Secure Export Tool\Example_Library.glb	...
C:\Secure Export Tool\blank.glb	C:\Secure Export Tool\Example_Library.glb
C:\Secure Export Tool\Example_Library.glb	...
*	

- **Row 2** – Perform the Export operation with *Example\_library.glb*

- **Row 3** – Perform the Convert Projects operation with *blank.glb*, then when finished, set the most recently used library to *Example\_Library.glb*. A blank library will prevent any gINT Rules from running during the conversion process.
- **Row 4** – Perform the Export operation with *Example\_library.glb*

	Correspondence File	Data Template
...	...	...
...	...	...
...	...	C:\Secure Export Tool\Example_Data_Template.gdt
...	C:\Secure Export Tool\AGS_Export.gci	...
*		

- **Row 3** – The source gINT Project files will be converted to *Example\_Data\_Template.gdt* project data template. No correspondence file entered, which means the source data does not need to be mapped to the data template's structure.
- **Row 4** – The data will be mapped to the AGS export format with *AGS\_Export.gci*.

Export File Save Path	Export File Save Path Time Stamp	Apply Export Time Stamp To	Export File Path Folder Name	Add Exported Files to Zip	Delete Exported Files After Zip
...	...	...	...	<input type="checkbox"/>	<input type="checkbox"/>
D:\BW Secure Export Tool Export Files	...	...	...	<input type="checkbox"/>	<input type="checkbox"/>
D:\BW Secure Export Tool Export Files	Suffix	Files	...	<input checked="" type="checkbox"/>	<input type="checkbox"/>
D:\BW Secure Export Tool Export Files	Suffix	Files and Folder	AGS_	<input checked="" type="checkbox"/>	<input checked="" type="checkbox"/>
*				<input type="checkbox"/>	<input type="checkbox"/>

- **Row 2** – The exported files will be placed in *D:\BW Secure Export Tool Export Files*
- **Row 3** – The converted files will be placed in *D:\BW Secure Export Tool Export Files*. The file names will then be suffixed with a timestamp of the date and time of execution.

For example, if the Secure Export Tool was run on the 15<sup>th</sup> October 2009 at 3:30:00 PM, and the file name is *gINTProject.gpj* then the file will be renamed to *gINTProject2009-10-15T133000*.

A copy of the converted files will then be placed in a Zip archive file. The Zip file will be created in the export file save path, alongside the original converted files.

- **Row 4** – The exported files will be placed in a folder named *AGS\_* suffixed with a timestamp of the date and time of execution. This folder will placed in *D:\BW Secure Export Tool Export Files*.

For example, if the Secure Export Tool was run on the 15<sup>th</sup> October 2009 at 3:30:00 PM, then the full directory path to the exported files will be *D:\BW Secure Export Tool Export Files\AGS\_2009-10-15T133000*.

The exported files will also be suffixed with a timestamp of the date and time of execution, and a copy of the exported files will be placed in a Zip archive file. The Zip file will be created in the full directory path explained in the example above, and the original exported files will be deleted after they have been zipped.

	Zip File Name	Zip File Time Stamp	Status	PointID Date Time Filter (hrs)	Project Date Time Filter (hrs)	'Where' Clause	Export Site Map	Export Surfaces	Export Drapes
							<input type="checkbox"/>	<input type="checkbox"/>	<input type="checkbox"/>
			3	24	48	[Approved_By] = 'AC'	<input checked="" type="checkbox"/>	<input checked="" type="checkbox"/>	<input checked="" type="checkbox"/>
	_EXPORT	Prefix					<input type="checkbox"/>	<input type="checkbox"/>	<input type="checkbox"/>
▶	_AGSEXPORT	Prefix	3	24	48	[Approved_By] = 'AC'	<input type="checkbox"/>	<input type="checkbox"/>	<input type="checkbox"/>
*							<input type="checkbox"/>	<input type="checkbox"/>	<input type="checkbox"/>

- **Row 2** – The exported files will only contain data from listed tables where the status field is greater than or equal to 3, and where the approved date is within 24 hours from the time of execution.

In addition, the source gINT Project file will not be exported if none of the PointIDs on the [POINT](#) table in each Project file have an approved date within 48 hours from the time of execution. This prevents old, completed Project files from being needlessly exported over and over again, as they do not contain any new data.

The 'Where' clause filters the exported data in every listed table to only include records where the [Approved\\_By](#) field has a value of AC. This assumes that every listed table has a field called [Approved\\_By](#).

Table names and their respective status and date time field names are listed in the [DG\\_SECURITY\\_TABLES](#) library table, in the gINT library file specified in the *gINT Library* column on this row.

Site maps, Surfaces and Drapes embedded in the exported Project files will be exported. External Surface files (\*.gsf) will also be exported if found.

- **Row 3** – The Zip file created for the converted files will be named `_EXPORT`, prefixed with a timestamp of the date and time of execution.

For example, if the Secure Export Tool was run on the 15<sup>th</sup> October 2009 at 3:30:00 PM, then the Zip file would be named `2009-10-15T133000_EXPORT.zip`.

- **Row 4** – The same export criteria as explained in Row 2 apply for these files. The Zip file created for the exported files will be named `_AGSEXPORT`, prefixed with a timestamp of the date and time of execution.

# 3 Running the Secure Export Tool

To run the Secure Export Tool, double click on the **Datgel Secure Export Tool** desktop icon, or select the Start menu item from **Start > Programs > Datgel > Datgel Secure Export Tool > Datgel Secure Export Tool**.

**Note:** Your user account must have administrator rights to the local computer in order to run the Secure Export Tool.

A time stamped log file of the execution will be created in the folder path defined in the *Export Log Save Path* setting. You may refer to this log to review the export process after it has been completed.

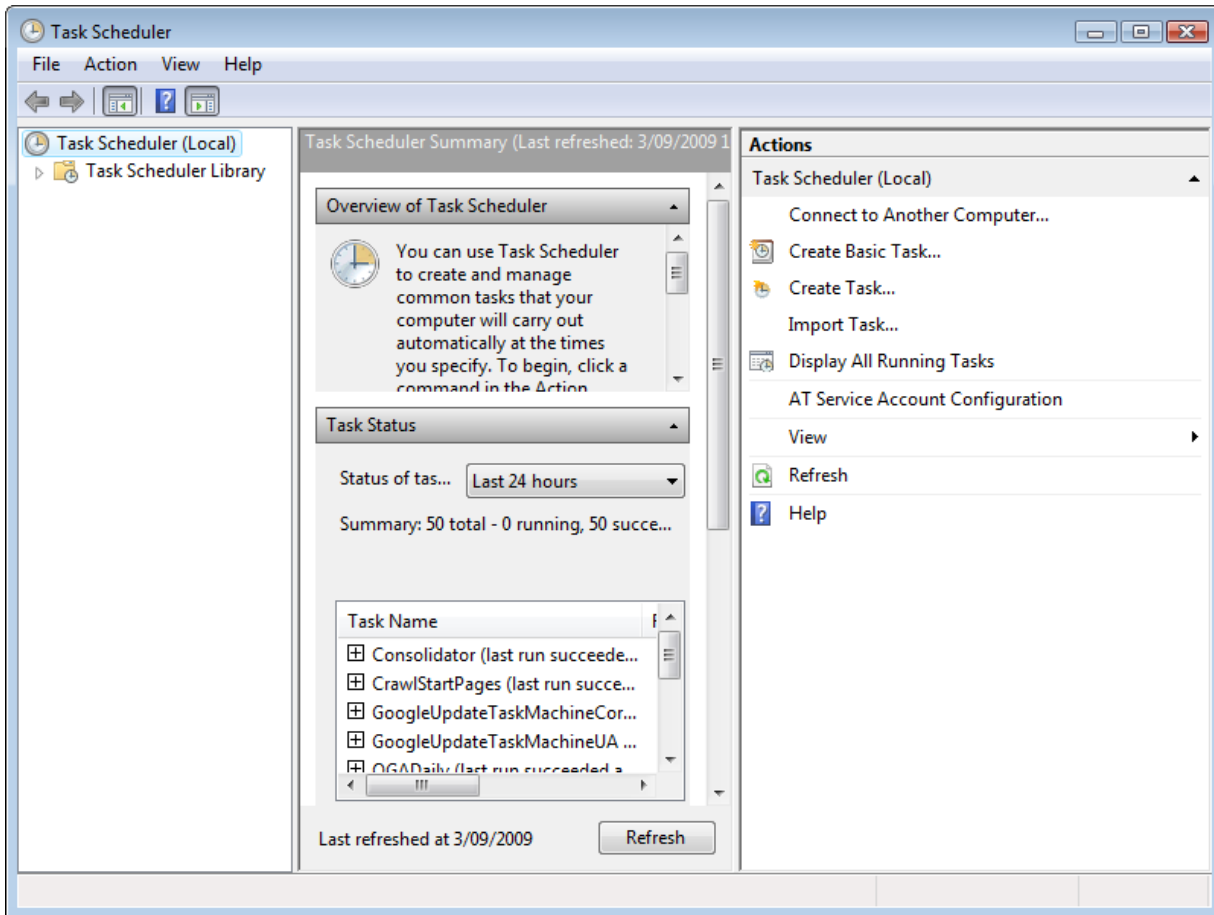
If the *Send Debug Log Email After Run* is checked and the *Email Settings* have been correctly configured, then the log file will be emailed at the end of the execution.

## 3.1 Adding the Secure Export Tool to Task Scheduler

In many cases, you will want to schedule the Secure Export Tool to run at a particular time, and on particular intervals of time.

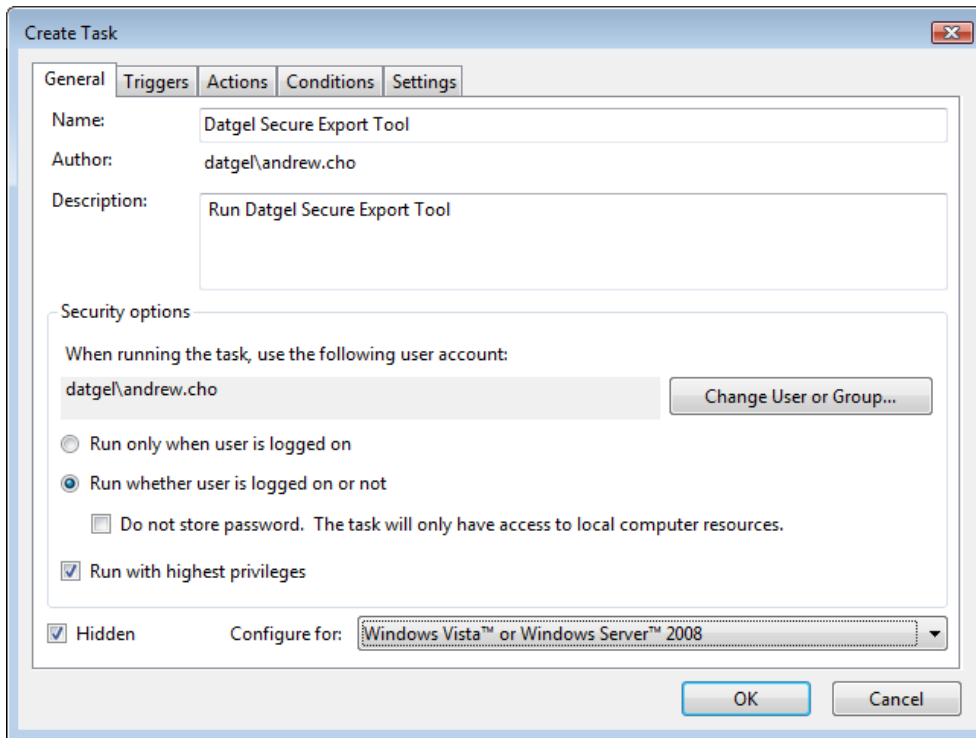
**Note:** This example was created on Windows 2008. Older operating systems have a different interface.

To add the Secure Export Tool to the Task Scheduler, open the Task Scheduler program which can be found in *Control Panel > Administrative Tools > Task Scheduler*.

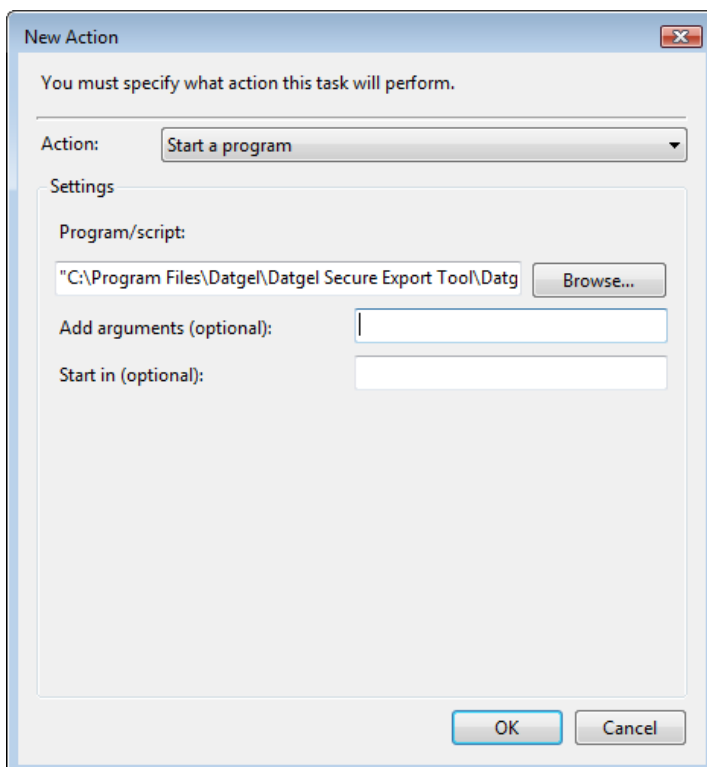


Click on *Create Task* on the right, then fill in the *General*, *Conditions* and *Settings* tabs are required.

**Note:** The user account selected to run the task must be in the local Administrators group, and you must check *Run with highest privileges* to ensure the Secure Export Tool runs correctly.



Then under the **Actions** tab, click on *New*. Select *Start a program* as the action, browse to the file *Datgel.SecureExportTool.exe* found in the Secure Export Tool installation directory, then click *Ok*.



# 4 Troubleshooting

If the Secure Export Tool is not running correctly, or you are getting unexpected results, check the Log file that would have been created in the *Export Log Save Path* on the configuration form. Most problems can be diagnosed by looking at this log file.

## 4.1 DG\_SECURITY\_TABLES

- Check that the [DG\\_SECURITY\\_TABLES](#) library table exists in the library file defined in the gINT Library setting in the Secure Export Tool Configuration.
- Check that the fields in the [DG\\_SECURITY\\_TABLES](#) library table. Check that the Tables listed in the *Table\_Name* field exist for the source tables, and the fields listed in the *Status\_Field\_Name* and *Date\_Time\_Field\_Name* fields exist in these tables.

## 4.2 Secure Export Tool Configuration

- Check that all file and folder paths entered exists, and that the folder paths are not read-only and the current user has full access rights to these folders. If the *gINT executable Path* or the *Export Log Save Path* are invalid, then the Secure Export Tool may malfunction or not run at all.
- Check that there are reasonable values for the *Status*, *PointID Date Time Filter*, *Project Time Filter*. For example, these values must be a numeric value. Check that the field referenced in the *'Where' Clause* text exists in the source Project files for all Status tables listed in the [DG\\_SECURITY\\_TABLES](#) library table.
- Check the *Email Settings* have been correctly configured, click on *Send Test Email* to check the *Email Settings*.

## 4.3 Secure Export Tool

- The Log created by the Secure Export Tool contains detailed information on the execution process and reviewing this file may be helpful in determining the cause of the problem. If the log file cannot be found, or is not being created, then check that the path of the Export Log Save Path exists and the current user has full access rights to the folder and that the folder is not read-only.
- Check the Task Manager to see if the Secure Export Tool or gINT is running. If they are running, and you expected these to have finished, try terminating the process and running the Secure Export Tool again.
- If the Secure Export Tool has been set to run with Task Scheduler, check the settings for the Task Scheduler are valid. An absence of a log file could mean the Secure Export Tool is never being executed by the Task Scheduler.