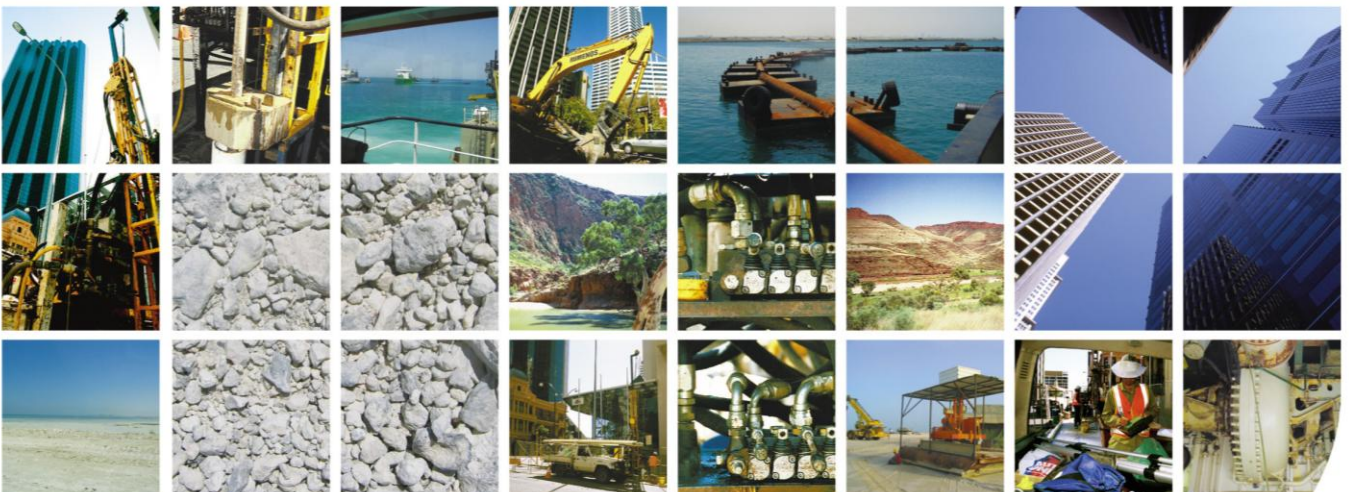


User Guide

Datgel Processor Affinity Manager

DPAM-UG-001 - 1.01
January 2010



Disclaimer

The information in this publication is subject to change without notice and does not represent a commitment on the part of Datgel Pty Ltd. The software described in this document is furnished under a license agreement or nondisclosure agreement. The software must be used or copied only in accordance with the terms of the agreement.

Every effort was made to ensure accuracy of this information. However, Datgel Pty Ltd makes no warranty as to the correctness of this information or the supplied files.

Printed in Australia. All rights reserved worldwide. No part of this publication may be reproduced in any form or by any means without the prior written consent of Datgel Pty Ltd. Comments are welcome and become the property of Datgel Pty Ltd.

All products mentioned are trademarks of the respective producers.

Copyright © Datgel Pty Ltd 2006-2010

Datgel Pty Ltd
Suite 8, Level 1, The Hub
89 - 97 Jones Street
Ultimo NSW 2007
Australia

Tel: +61 2 8202 8600
Fax: +61 2 8202 8606

Email: info@datgel.com
Website: www.datgel.com

Contents

About the Product.....	ii
Support	ii
System Requirements	ii
Hardware	ii
Supported Operating Systems	ii
Required Windows Components.....	ii
Conventions and typography used in this guide	ii
Field Colours.....	iii
1 Installation and Licensing.....	1
1.1 Program Installation.....	1
1.2 Activate the Product License	3
1.3 Enter the Application Settings	3
2 Using the Product.....	4
2.1 Datgel Processor Affinity Manager Administrator	4
2.1.1 Program Executable text box	4
2.1.2 Program Arguments text box.....	5
2.1.3 Shortcut Title text box	5
2.1.4 Shortcut Description text box	5
2.1.5 Shortcut Icon section.....	5
2.1.6 Shortcut Locations section	6
2.2 Datgel Processor Affinity Manager Licensing.....	6

Figures

Figure 1 - Install package first window.....	1
Figure 2 –License Agreement	2
Figure 3 - Install package second window	2
Figure 4 - Install package third window.....	3
Figure 5 - Applications Settings Editor	4
Figure 6 - Icon Picker window	6

About the Product

Datgel Processor Affinity Manager allows older style Windows programs that do not support, or were not designed to take advantage, of multi-core processing to utilise all the cores on a computer, providing better performance for your application and overall system. This is particularly useful where you:

1. Are using Windows Terminal Server and Remote Desktop to provide a program to several users from the one terminal server; or
2. Open several instances of a program to work with your projects and documents.

The Processor Affinity Manager program can be associated with any program and will start the program to use a different processor core each time the program is started. By distributing the processes across all the cores of the processor, the Processor Affinity Manager allows multiple instances of the program to utilise the computer's resources more effectively.

You need to complete the installation procedure (see *1.1 Program Installation on page 1*) and activate (see *Datgel Product Licensing System User Guide*) before you can use the Processor Affinity Manager.

Support

12 months support and maintenance is included with the license purchase. For technical support please email support@datgel.com or call +61 2 8202 8600.

System Requirements

Hardware

Your computer must have at least one multi-core processor.

Supported Operating Systems

- Windows Server 2003 (x86, x64 or Itanium)
- Windows Server 2008 (x86, x64 or Itanium)
- Windows XP (x86 or x64)
- Windows Vista (x86 or x64)

Required Windows Components

1. Windows Installer 3.1
2. .NET 3.5 Framework SP1

Conventions and typography used in this guide

Note: Tips and additional Information to help you.

>	Used to indicate a series of menu commands. e.g. Select File > Open .
	Used to indicate a gINT Application Group, Application, Table Group or Table , e.g. DATA DESIGN Project Database
Bold Text	Items you must select, command buttons, or items in a list. e.g. Navigate to UTILITIES Convert Projects (4 th tab).

<i>Italics Emphasis</i>	Use to emphasize the importance of a point such as parameters. e.g. Data Entry – Check <i>Omit Must Save prompt when save is required</i>
CAPITALS	Names of keys on the keyboard. for example, SHIFT, CTRL, or ALT.
KEY+KEY	Key combinations, for example CTRL+P, or ALT+F4.
Code Snippet	Indicates a code snippet within a paragraph
Code sample	Indicates a sample program codes inserted in user guide e.g. <pre>public override string ToString ()</pre>
File name or path	Used for formatting file name and paths e.g. di_lib.glb or V:\10 gINT\Datgel Install Files\
Table_Name	Database table name, e.g. POINT_TABLE.
Field_Name	Database field name; e.g. PointID
Command line	Command line, presented exactly as it must be entered e.g. cdir

Field Colours

Each of the fields in the project tables have been coloured to improve the data entry process as indicated below in Table 1.

Table 1 – Field Colours

Field Colour	Field Name and Explanation
Yellow	gINT Key Field – mandatory data entry
Pastel Purple	AGS Data – data associated with the AGS Data Interchange format
Pastel Green	Calculated Field – data is written to this field by Datgel's code
Pastel Beige	Data Entry Field – data should be entered into this field, or data in this field influences the calculation
Pastel Red	Legacy Data Field – historic data entered here, is from typically an old database
Pastel Blue	Output Option – used to control how the data displayed on a report
Pastel Orange	Remark or Metadata Field – additional data associated with the primary information
Grey	Read-only

1 Installation and Licensing

There are three parts to the installation process:

- Program installation
- Activate/validate the product license
- Enter the Application Settings using the Application Settings Editor

The activation/validation procedure must be performed before the program can be used and is described in the Datgel Product Licensing System User Guide.

1.1 Program Installation

The installation package is distributed as two files:

1. setup.exe
2. Datgel.ProcAffinity.Setup32.msi

If you are certain that the dependent Windows Components, Windows Installer 3.1 and Microsoft.NET Framework 3.5 SP1 are installed on your machine then you may ignore the setup.exe file and double click on the Datgel.ProcAffinity.Setup32.msi installer package. Otherwise double-click on the setup.exe file which will check for the dependent software and install from the internet if it is not present on your computer.

If you do need to install the dependent software, the install packages will be downloaded from the internet and the prompts should be self-explanatory. However, if required, refer to Microsoft's documentation for the dependent Windows Components.

Once the Datgel Processor Affinity Manager installation package starts, you will be presented with the Introduction window, as below in Figure 1. Click the *Next >* button to proceed.

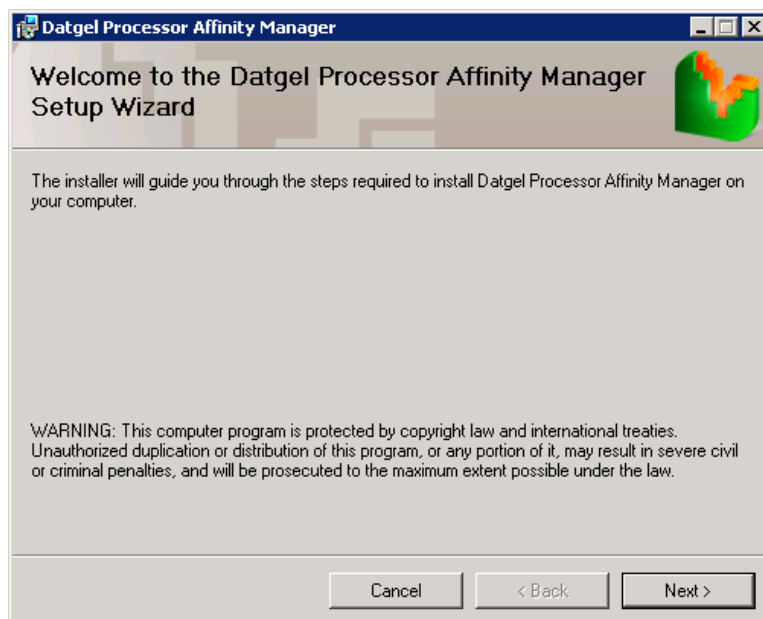


Figure 1 - Install package first window

If you agree with the license agreement then select the **I Agree** radio button, then click **Next >**. If you don't agree with the license agreement, then click **Cancel**.

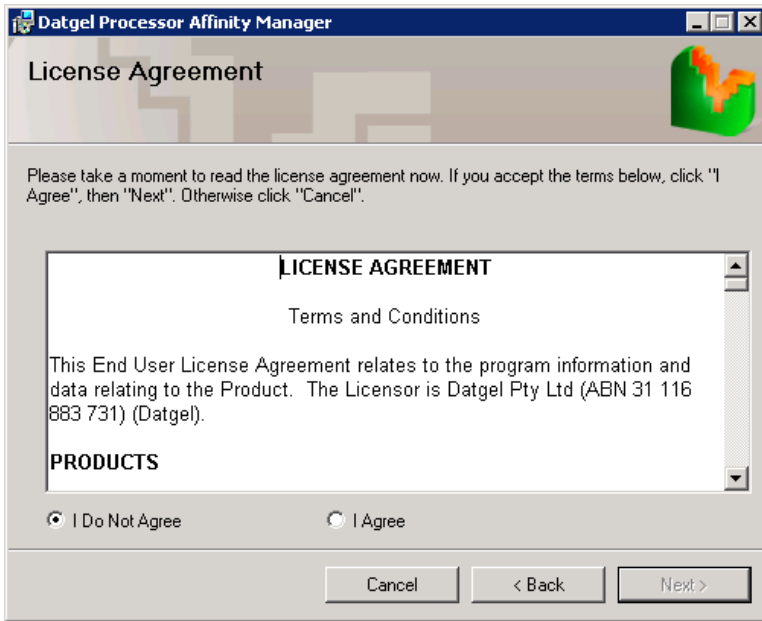


Figure 2 –License Agreement

The default location for installation of the program is C:\Program Files\Datgel\Datgel Processor Affinity Manager, as shown in Figure 2, below. If you wish to install the program in a different location, then click the “Browse...” button and select a new folder for installation, using the file system navigator provided. Once you have selected a location that satisfies you, click “Next >” to proceed.

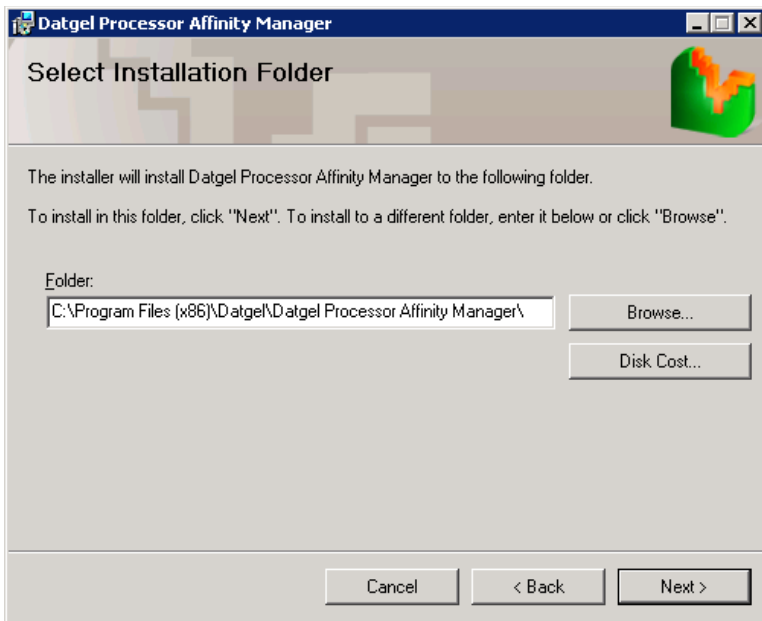


Figure 3 - Install package second window

A final confirmation is displayed as illustrated below in Figure 3. Click the “Next >” button to perform the installation.

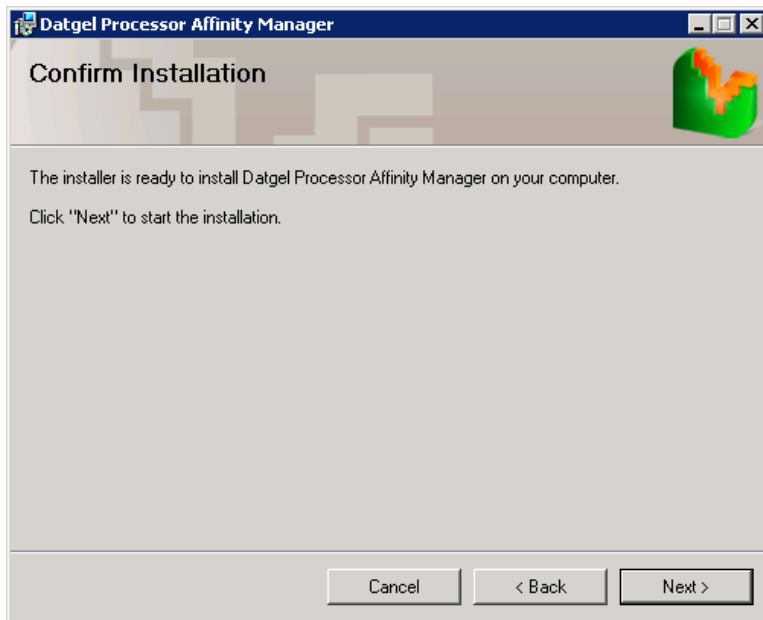


Figure 4 - Install package third window

1.2 Activate/Validate the Product License

Refer to the instructions provided in the Datgel Product Licensing System User Guide.

1.3 Enter the Application Settings

The last step of the installation process is entry of the Application Settings with the Application Settings Editor. If you wish to change these settings at a later date, you may run this program at any time from the Start menu at **Programs > Datgel > Datgel Processor Affinity Manager > Datgel Processor Affinity Manager Administrator**.

For help, refer to *2.1 Datgel Processor Affinity Manager Administrator*, or use the online help provided by pressing the F1 key while on the form.

2 Using the Product

Start your program using the shortcut created by the Datgel Processor Affinity Manager Settings Editor, and Datgel Processor Affinity Manager will automatically manage the processor affinity for that instance of the program.

2.1 Datgel Processor Affinity Manager Administrator

To change the configuration, or to add another program to manage with Datgel Processor Affinity Manager, launch the Datgel Processor Affinity Manager Application Settings Editor from the Start menu at **Programs > Datgel > Datgel Processor Affinity Manager > Datgel Processor Affinity Manager Administrator**.

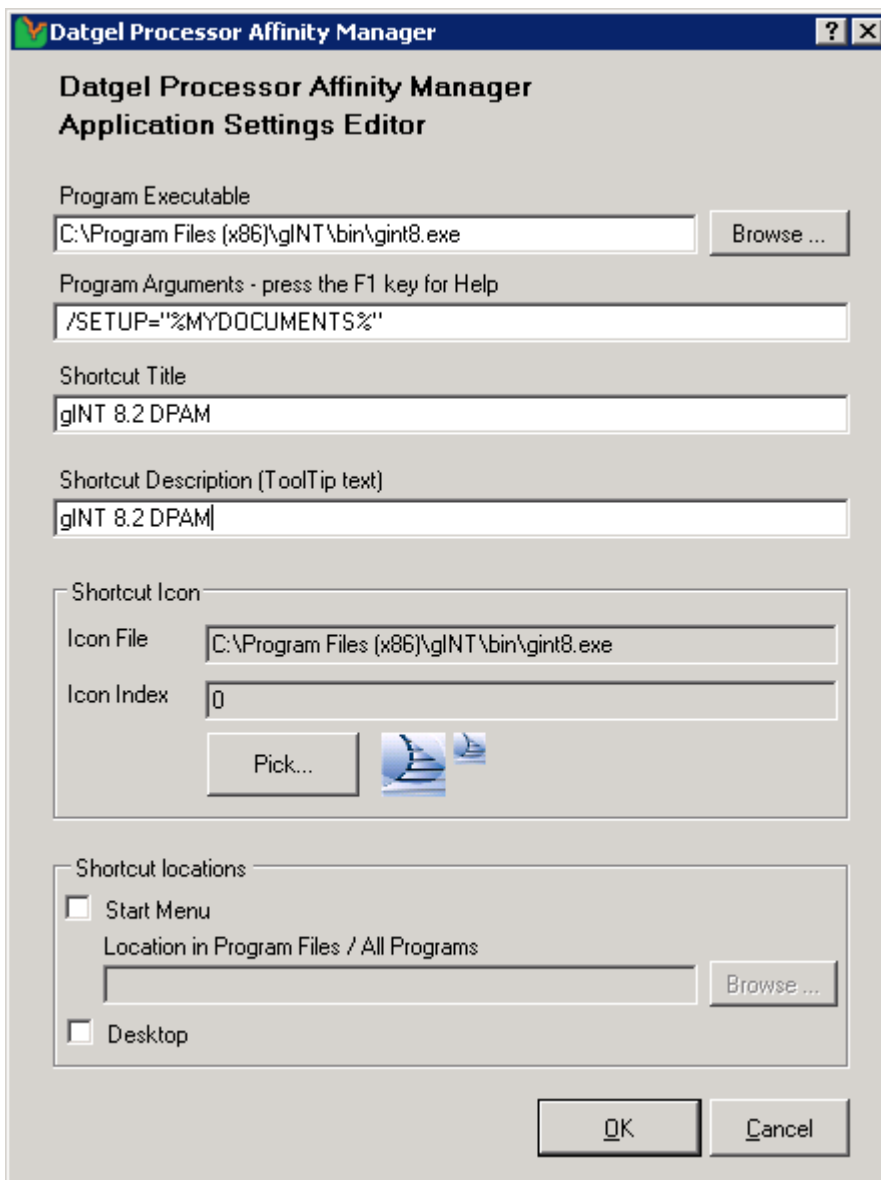


Figure 5 - Applications Settings Editor

2.1.1 Program Executable text box

Select the program you wish to manage with Datgel Processor Affinity Manager by typing the full path of the program, or, using the file selection window that opens when you click the "Browse..." button.

2.1.2 Program Arguments text box

Refer to the help and documentation for the program you have selected for help with the specific arguments and switches it may support.

Use this text box to enter any arguments or switches required by the program you have chosen to manage with Datgel Processor Affinity Manager.

If any arguments for your program use system folders, then you can use the following variables in your arguments in place of the folder location. This is useful because different users on a computer will have different folders for many of these variables. The variable will be replaced with the full path to the system folder when the program is started.

- `%ALLUSERSAPPDATA%` - The application data directory for all users of the computer. The folder is usually located at `C:\Documents and Settings\All Users\Application Data` on Windows XP and `C:\ProgramData` on Windows Vista.
- `%ALLUSERSDESKTOPDIR%` - The desktop directory for all users of the computer. Programs or shortcuts in this folder appear on all users' desktops. The folder is usually `C:\Documents and Settings\All Users\Desktop` on XP and `C:\Users\Public\Desktop` on Vista.
- `%ALLUSERSDOCUMENTS%` - The "My Documents" folder for all users. Files in this folder appear in all user's My Documents. This folder is usually at `C:\Documents and Settings\All Users\My Documents` on XP and `C:\Users\Public\Documents` on Vista.
- `%APPDATA%` - The current user's application data folder. This is usually `C:\Documents and Settings\username\Application Data` on XP and `C:\Users\username\AppData` on Vista.
- `%DESKTOPDIR%` - The current user's desktop. This is usually `C:\Documents and Settings\username\Desktop` on XP and `C:\Users\username\Desktop` on Vista.
- `%MYDOCUMENTS%` - The current user's My Documents folder. This is usually `C:\Documents and Settings\username\My Documents` on XP and `C:\Users\username\Documents` on Vista.
- `%SYSTEMROOT%` - The folder containing the operating system. Usually `C:\Windows` or `C:\WINNT`.
- `%USERPROFILE%` - The root folder of the current user's profile. On Windows XP this is usually `C:\Documents and Settings\<<username>>` and on Windows Vista, `C:\Users\<<username>>`.

No validation is performed on the value you enter for this field, so please check your spelling carefully. If the program under management fails to start and you have entered a value in this field, then it is likely that you have entered this value incorrectly.

2.1.3 Shortcut Title text box

Enter the title that will appear on any shortcuts you create. Generally, this should be the name of the program that you are managing with Datgel Processor Affinity Manager.

2.1.4 Shortcut Description text box

Enter the text for the ToolTip that will be shown for any shortcuts you create.

2.1.5 Shortcut Icon section

When you select an executable program (`*.exe`, `*.cmd`, `*.bat`) to manage with Datgel Processor Affinity Manager, using the Program Executable text box at the top of the Application Settings Editor

window, if an icon is associated with that program, it is automatically selected as the icon to use for the replacement shortcuts to the program under management. To select a different icon, click the **Pick ...** button, which displays the *Choose Icon* window, as shown below (Figure 6).

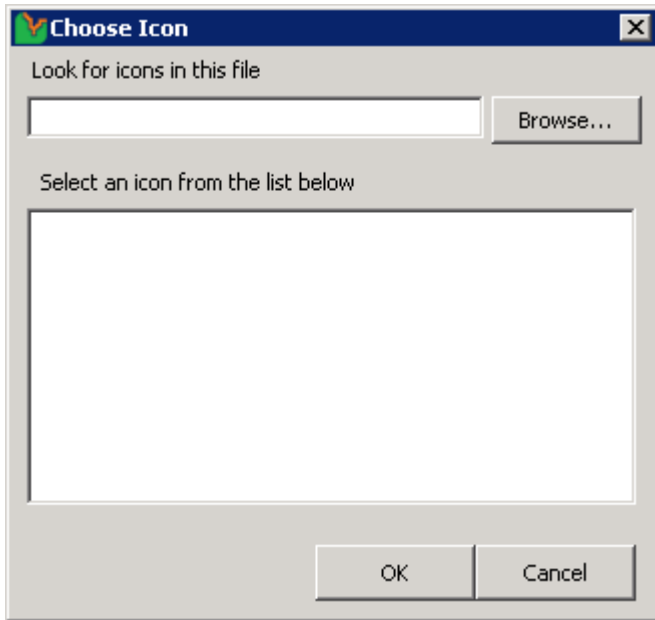


Figure 6 - Icon Picker window

Select the executable file or icon file (*.exe, *.dll, *.cmd, *.ico) which contains the icon you wish to use for the shortcuts to the program you are managing with Datgel Processor Affinity Manager, by typing in the full path to the file in the text box or using the file system navigator window that is opened by clicking on the **Browse...** button.

All the icons available in the file are displayed below the file selection text box. You may pick one and one only, of the icons shown to be included with the shortcuts to your program under management.

2.1.6 Shortcut Locations section

In order to use your program with Datgel Processor Affinity Manager you must start the program using the shortcuts created by the Application Settings Editor. It is recommended you select the current shortcut to your program under management in the Start Menu using the file system navigator window opened with the **Browse...** button. The text box and button are enabled once you check the **Start Menu** box.

If you would like to add a shortcut to your Desktop, then check the “Desktop” box.

2.2 Datgel Processor Affinity Manager Licensing

To change or update your license settings, launch the licensing form from the Start menu at **Programs > Datgel > Datgel Processor Affinity Manager > Datgel Processor Affinity Manager Licensing**.