

MEMORANDUM

Datgel Pty Ltd
Suite 8, Level 1, The Hub
89 - 97 Jones St, Ultimo NSW 2007 Australia

Tel: +61 2 8202 8600
Fax: +61 2 8202 8606
Email: support@datgel.com

To: gINT Users **Date:** 20 Oct 2011

From: Michael Sartika / Phil Wade **Job No:**

Copy: **Doc No:**

RE: **Creating a new coordinate system and applying it in gINT and MicroStation**

1 Required software

1. Bentley Map select series 2 or later
2. gINT Professional Plus 8.30.03.52 or later
3. MicroStation Select series 1 or later

2 Step 1: Defined new coordinate system in Bentley Map

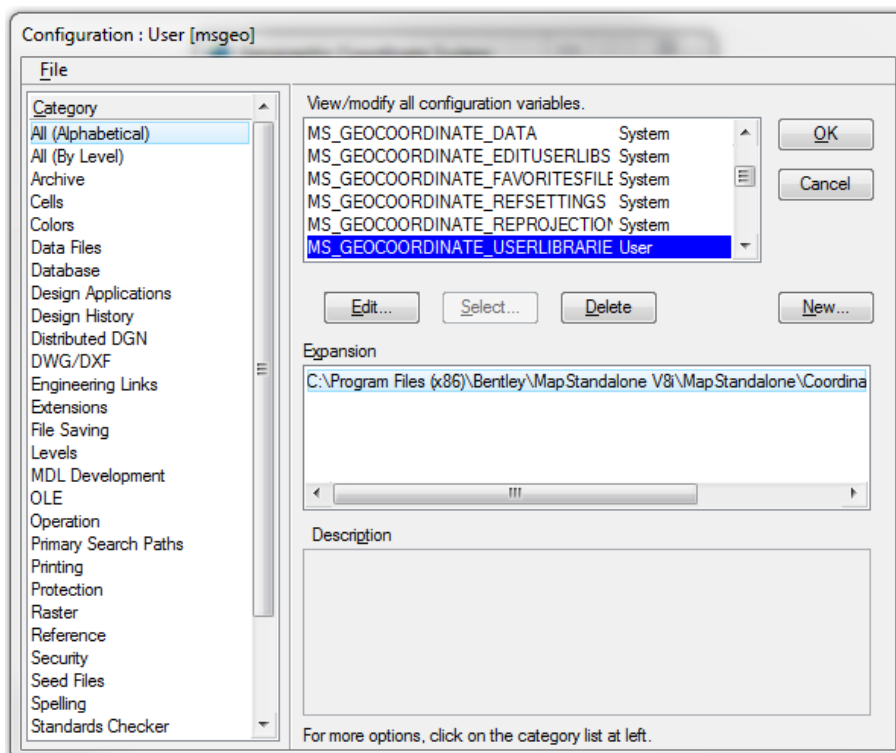
1. **Copy** the *seed* file located in the default directory

C:\Program Files (x86)\Bentley\MapStandalone
V8i\MapStandalone\Coordinate\seed\seed.dty

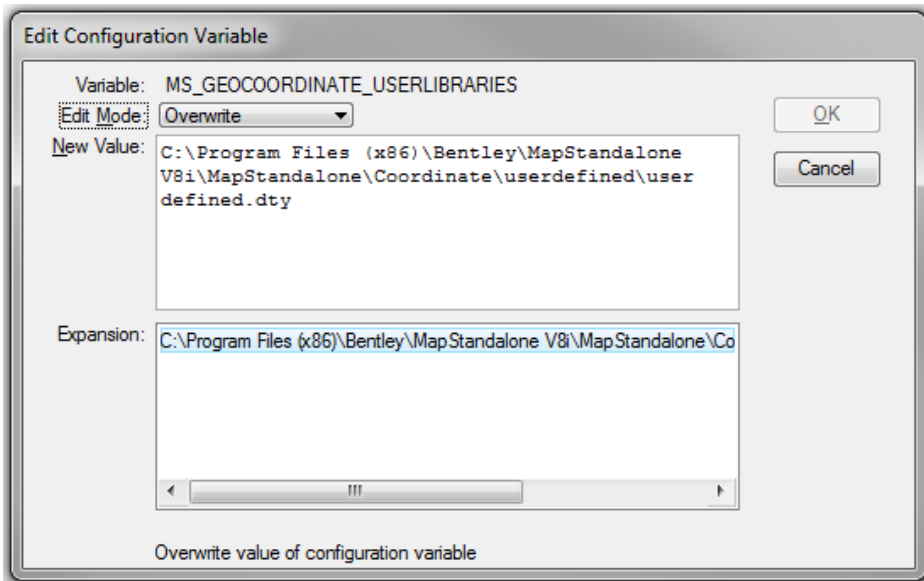
to another folder [your_folder\your_library_file] :

C:\Program Files (x86)\Bentley\MapStandalone
V8i\MapStandalone\Coordinate\userdefined\userdefined.dty

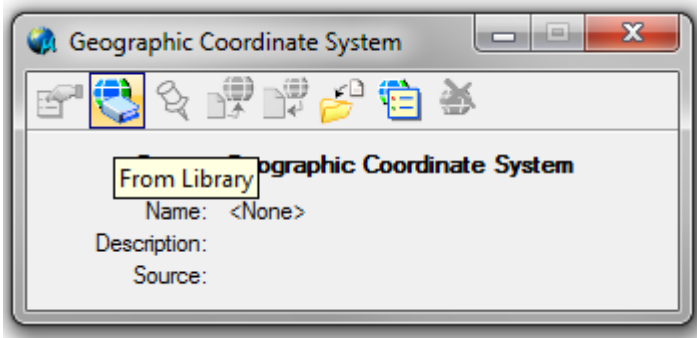
2. After that, in Bentley Map go to **Workspace > Configuration**



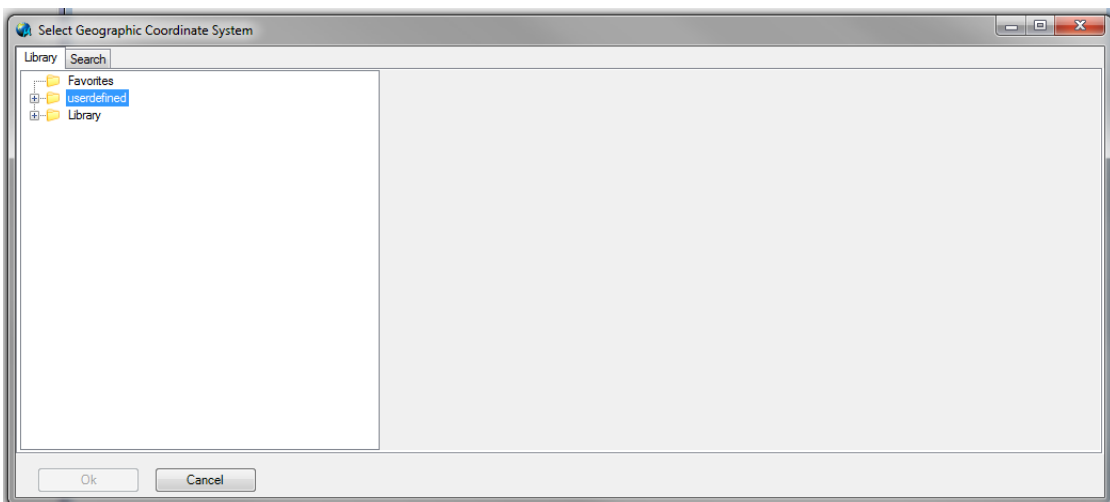
3. Look for *MS_GEOCOORDINATE_USERLIBRARIES* configuration variable, if it cannot be found you can create a new user library by clicking on the **New** button and put *MS_GEOCOORDINATE_USERLIBRARIES* as the *Variable* name and your system library file location as its *New Value*. Otherwise you can edit the existing user library values and **save**.



4. Re-start Bentley Map, then select the **Tools > Geographic > Select Geographic Coordinate System** menu.
5. From the Geographic Coordinate System tool palette select the *From Library* command.



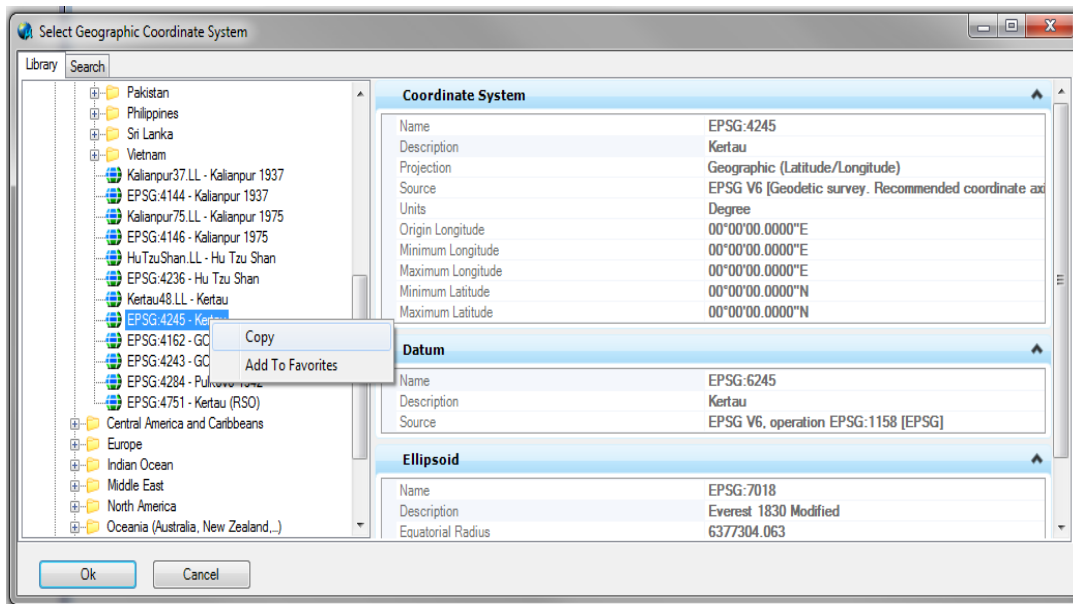
6. The user library should be available in the *Select Geographic Coordinate System* dialog box



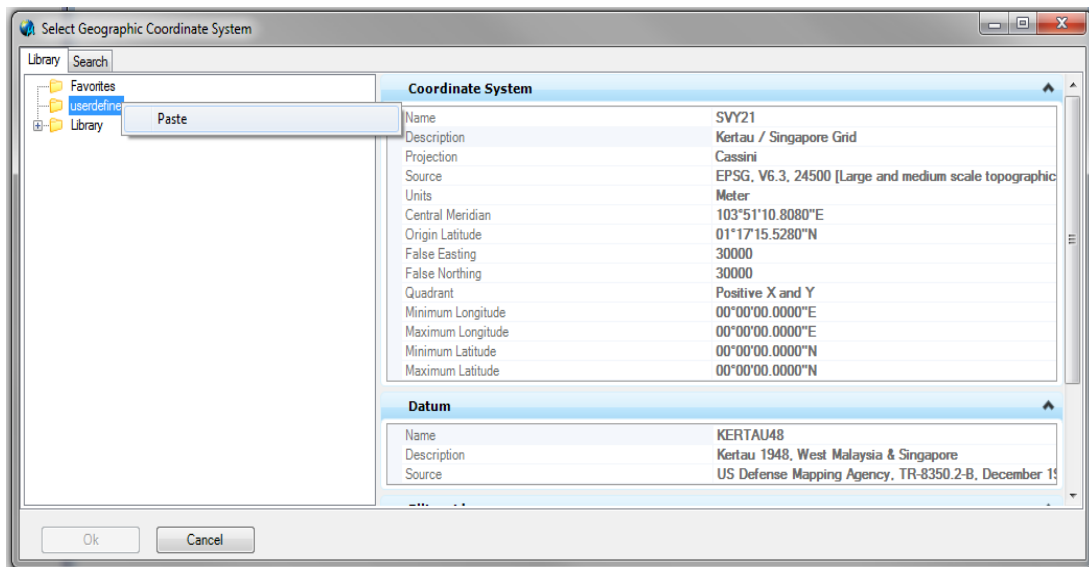
Bentley Map does not allow users to edit any of the coordinate systems in the delivered library. Rather, users should copy an existing coordinate system and paste it in the user library to edit the copy.

3 Step 2: Create a user defined coordinate system

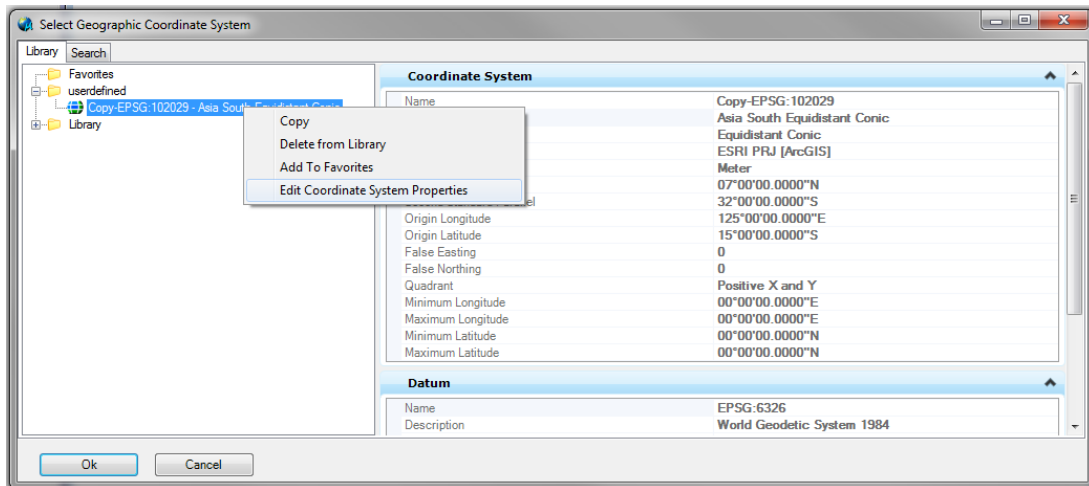
1. Locate the coordinate system to edit, or one that is similar if you are to add a new one
2. **Right click** on the coordinate system entry and select **Copy**



3. Highlight the *userdefined* user library in the *Geographic Coordinate System* dialog and select **Paste**



4. Select the coordinate system, **right-click** and select **Edit Coordinate Systems Properties**



5. The coordinate system properties is now available to be edited.

4 Applying a user defined coordinate system to gINT

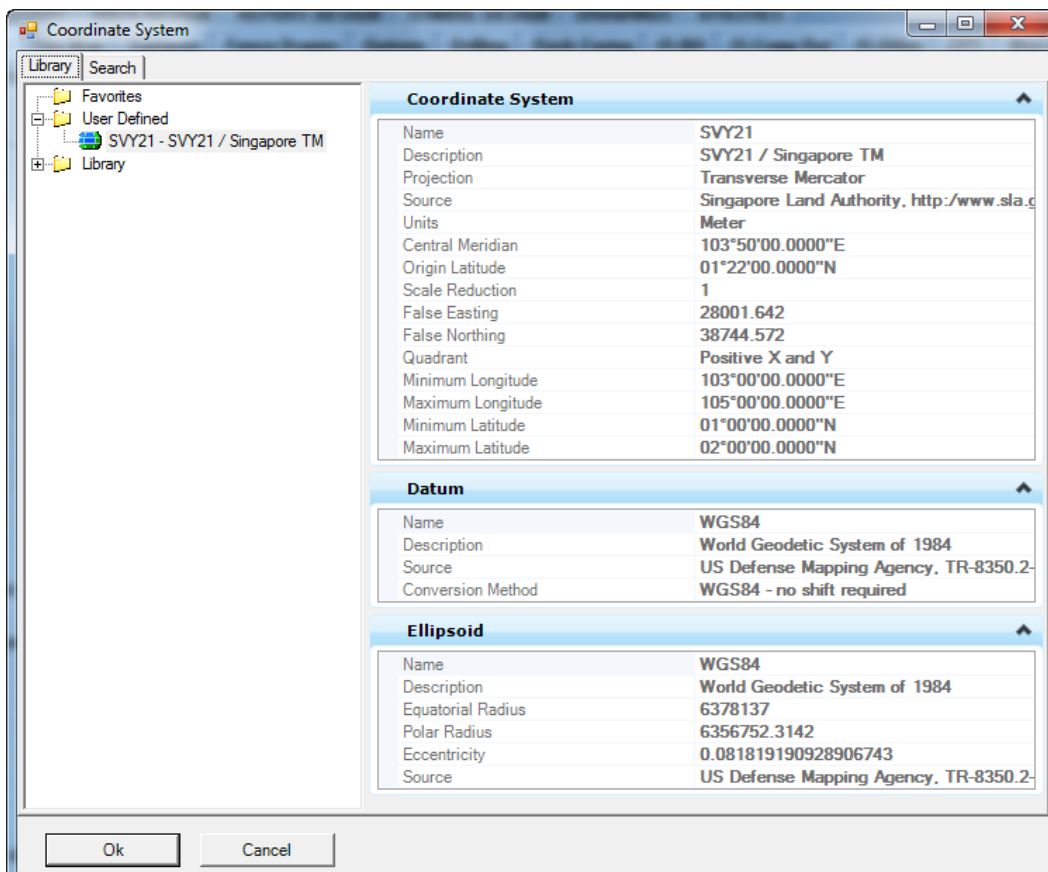
1. **Copy** the *userdefined.dty* file located in the default directory

C:\Program Files (x86)\Bentley\MapStandalone
V8i\MapStandalone\Coordinate\userdefined\userdefined.dty

to workstation *GeoCoordinateData* folder :

C:\Users\Public\Documents\Bentley\gINT\CustomCoordinate\userdefined.dty

2. Open gINT, and the new coordinate system will be available in the coordinate tool



5 Applying use user defined system coordinate in MicroStation

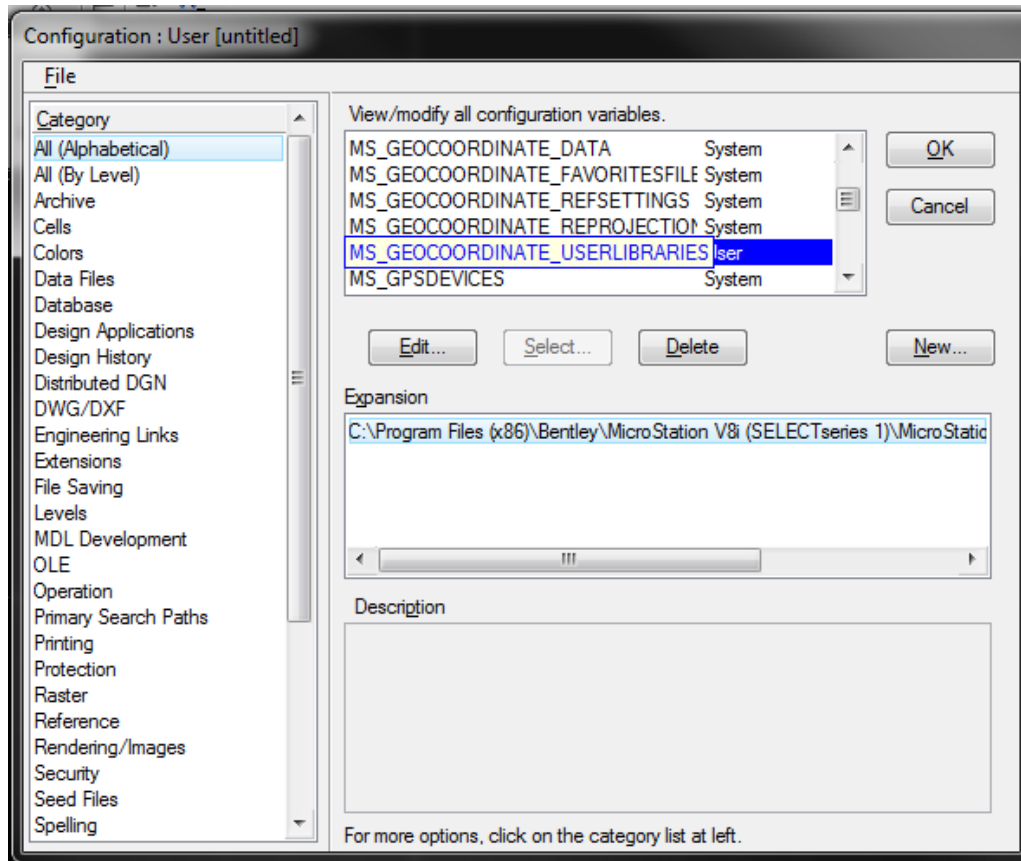
3. Copy the *userdefined.dty* file located in the default directory

C:\Program Files (x86)\Bentley\MapStandAlone
V8i\MapStandAlone\Coordinate\userdefined\userdefined.dty

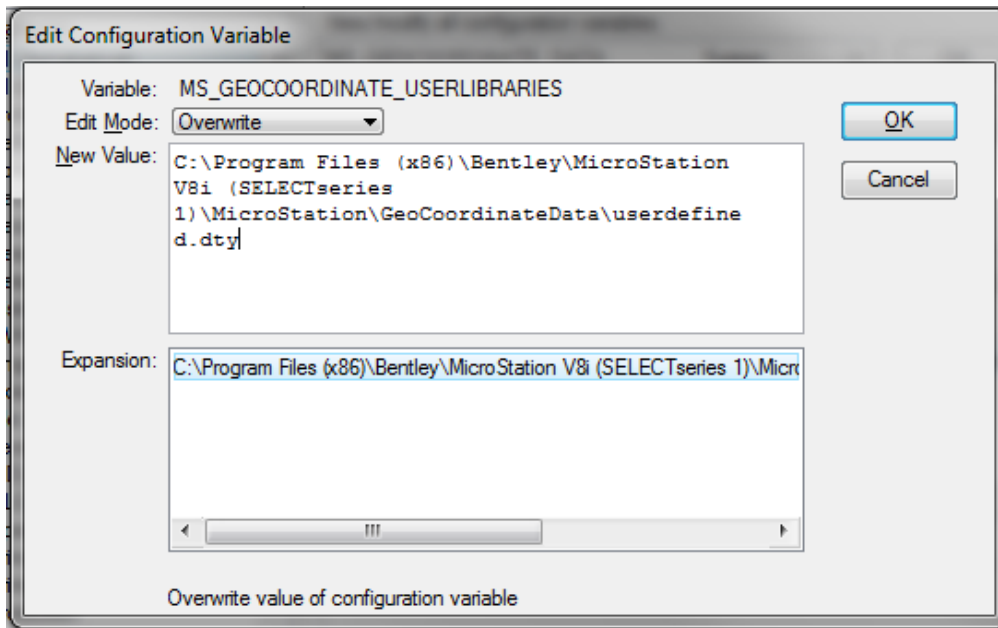
to workstation *GeoCoordinateData* folder :

C:\Program Files (x86)\Bentley\MicroStation V8i (SELECTseries
1)\MicroStation\GeoCoordinateData\userdefined.dty

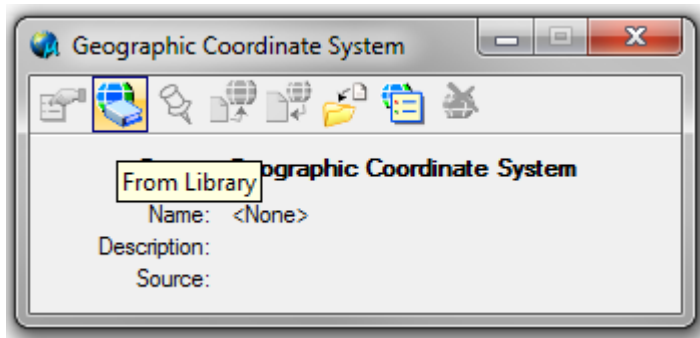
4. After that, in MicroStation go to **Workspace > Configuration**



5. Look for *MS_GEOCOORDINATE_USERLIBRARIES* configuration variable, if it cannot be found you can create a new user library by clicking on the **New** button and put *MS_GEOCOORDINATE_USERLIBRARIES* as the *Variable* name and your system library file location as its *New Value*. Otherwise you can edit the existing user library values and **Save**.



6. Re-start MicroStation, then select the **Tools > Geographic > Select Geographic Coordinate System** menu.
7. From the Geographic Coordinate System tool palette select the *From Library* command.



- The user library and the user defined coordinate system should now be available in the *Select Geographic Coordinate System* dialog box

