

gINT VERSION 8.2

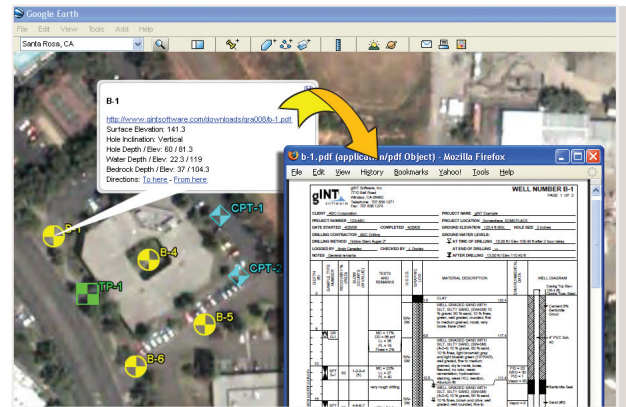


HERE ARE JUST A FEW HIGHLIGHTS OF GINT 8.2. FOR A COMPLETE LIST OF NEW FEATURES, VISIT THE GINT WEB SITE AT WWW.GINTSOFTWARE.COM/UPGRADES_FEATURES.HTML.

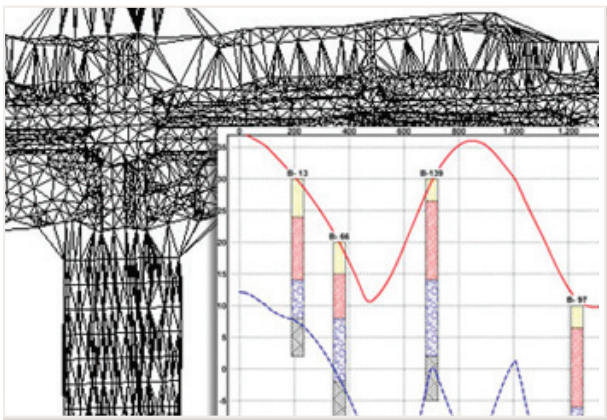
Publish Boreholes to Google Earth™

gINT 8.2 lets you publish your boreholes as icons in Google Earth. You can specify the icon, label and colors for the borehole and provide descriptions (including links to PDFs with boring logs) that appear when you click the icon in Google Earth.

Displays are customizable (by user or by gINT Software Technical Services) using gINT Rules.



Boreholes in Google Earth



Tin Surfaces

Define Surfaces Using Triangulated Irregular Networks (TIN)

Like grid surfaces, the profile lines through TIN surfaces can be displayed on 2D fence diagrams.

LandXML Import

Import TIN Surfaces, Alignments and Site Map drawings from LandXML.

Highlight Important Data with Color

You can now automatically color cells, rows, and columns based on your own criteria. For example, you could set all rows below bedrock to display in red, while all values over a certain level could display as green.

Generate Soil Classifications on Input

This lets you quickly compare estimated vs. actual lab test results.

	Depth	Field 1	Field 2	Field 3
	1	5	10	15
	10	20	30	40
	20	60	80	100
	30	150	200	250
	40	300	400	500
	45	40	30	20
★				

Highlight Data

View Input Data in Tree Format

View Input tables in tree format, as well as in the default tab format.

Vary Graph Scales on Page-By-Page Basis

You can vary graph scales on a page-by-page basis either based on the data or criteria of your design.

Use Road Alignment Data as Baselines

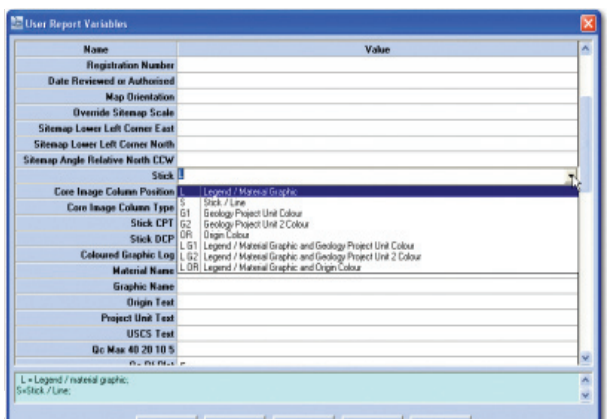
With the new Alignments tab you can store road alignments data and baselines within your project database, use them on site map reports and as selectable baselines for fence output. They can also be used to calculate station and offset from coordinates and vice-versa.

Depth (m)	Base (m)	Strength	Colour	C
0	0.9	loose	dark brown	s
0.9	3.5	stiff	brown with blue	si
3.5	5.5	stiff	brown	si
5.5	5.9	firm		si
5.9	7	dense	brown	c

Tree Format

Field Properties for User Report Variables

User report variables are now designed like project file fields, with data types and lookups.



User Report Variables

gINT Timed Licenses

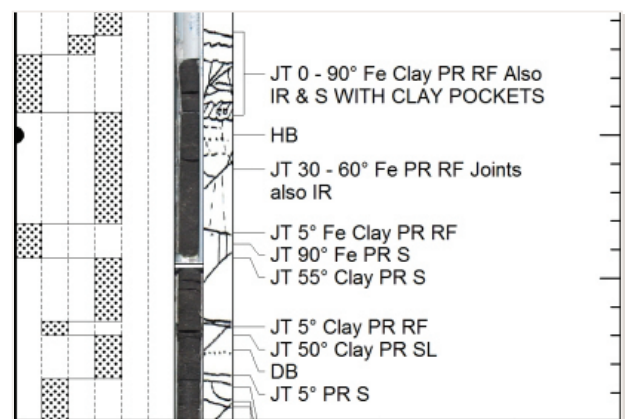
New to gINT version 8.2; A timed license permits you to use gINT for a defined time period and it is not restricted to a specified location.

Depth Related Images on Logs

The new depth related bitmap image feature allows you to display images matching the vertical scale on your reports. The images can also be broken across a page.

gINT in Other Languages

The gINT interface now supports English (US), English (UK), Spanish and Czech.



Depth Related Images